

News of the Wellington HOG Chapter #9066 Sponsored by Wellington Motorcycles

Some pictures from Sunday 20th Poker Run



Sundays March ride was a "Round the Houses" poker run. Keep it simple and make it fun so after leaving WMCC we were off to Brian Lee's gaff in Stokes Valley the third card was dealt at John and Lynne's residence in Titahi Bay and then on to Lucy and Murray's hill top mansion for the fourth card. The final hand was dealt at the Sandbar in Mana along with some large platters of pub grub! Winner takes all was the rule and so local cardsharp Jenny Dey took away the kitty of \$330 (much to Jon's delight)

Lyall Bay School Fundraiser



We had a good turnout of bikes on a sunny Friday evening and a lot of kids lining up for a ride. The ride from the school to the southern end of the airport and back gave them a thrill, especially the noise going through the curving tunnel at the end of the runway

Assistant Directors Ride Queens Birthday Weekend

The Assistant Directors ride will be to New Plymouth this year. Leaving from Plimerton weigh station on Saturday 4th June at 10am with a couple of stops on the way. We will return on the Monday 6th.

The accommodation I have selected is the Carrington Motel which has a range of different rooms etc. Their email address is stay@carringtonmotel.co.nz and phone 06 757 9431 **Please make your own bookings and say you are with Wellington HOG**



Been in the chapter for 10 years or more? If you have and you want a 10 year member patch please phone Terry 04 234 6141 and put in your order
The patch costs \$5 and is about 7cm high

CHRISTCHURCH EARTHQUAKE

It was agreed at the March club meet that the chapter would donate the sum of \$2000 to the Christchurch Appeal.

Xmas Party

This years xmas party has been penciled in at the Angus Inn, Lower Hutt. for December 17th. This will again be subsidised by the chapter. More details as they are finalised

Chapter Committee

You may (or may not have) received a letter calling for nominations for Wellington Chapter Committee members, All the positions are available and you can either apply yourself or another member can make a nomination.

The executive committee is selected by Garry and Steve at WMCC

Lyall Bay School fundraiser

Hi Lyn

Can you please pass on a huge thanks to those who helped at the Lyall Bay School Fair last Friday. Even Tana made it on the right day this time, although he complained the Hangi wasn't cooked. The rides were a huge success for the school with \$500 raised just from the rides. This worked out to about 100 rides over a two hour period! Spider did seem to be the most popular though!

Thanks again
Kebs and Jocelyn

Wanted:

Wanted to borrow or steal, sundowner seat or similar for an 04-05 DYNA Wideglide. Contact Simon on 049053349 or 0272318811.

Correction:

Last issue had Jean Tieman as one of the winners to Fargo, this was an error as her name is Janine, sorry about that!

DIRECTORS REPORT

February has been a fabulous month of motorcycling, the national rally in Raglan followed by the Directors ride being the highlight. Well done to the Hamilton crew for bringing together a good rally, great food, great thunder ride and great to catch up with old friends. The weather gods were definitely smiling on us for our tour of the North Island. I've been to a few new places, the forgotten world highway (only 15kms of hard packed gravel). Thanks Ken O'Leary for making sure I was OK with gas on that ride HA. Paihia and Waitangi were pretty special but the most special experience was Tane Mahuta. We arrived mid afternoon on a hot sunny day with our Americans in tow. A group of school kids were just leaving when we arrived and much to our delight performed a Waiata as they were leaving. It's truly spectacular, 13 metres in diameter and over 51 metres tall. Unfortunately we did manage to break our Americans, with one off on one of the gnarly bends between Whitianga and Tairua, no major injury, more an injury to pride I think. The last day is always a bittersweet, as you head home to your own bed but you leave your friends and over the 10 days we had together we formed quite a bond. Thanks everyone on the trip for making it so great. The real irony in the trip was the only person to get a speeding ticket was Terry Woodhall, bloody boy racer!

I'm stepping down from the Directors role this year so someone else can have a turn. Interviews for a replacement are underway and I'm looking forward to being able to be a participant on next year's Directors ride.

CHAPTER RIDE TO DUNEDIN NATIONALS

Yes I know it was only a month ago that the 2011 Raglan nationals were held but you know how time flies when you're getting old!

Next February we propose that we leave Wellington on the Wednesday afternoon ferry (1pm) and ride to Blenheim staying at the Blenheim TOP 10 holiday park www.blenheimtop10.co.nz This means we can have a chapter breakfast on Thursday 16th before leaving for Methven and staying overnight.

Methven Resort, Main St, Methven, Phone: 03 302 8724 or email: ann@methvenresort.com

The Blue Pub, Methven Email: greg@thebluepub.co.nz or <http://www.thebluepub.co.nz>

Abisko Apartments and Campground, 74 Main Street. Email: accommodation@abisko.co.nz or <https://www.abisko.co.nz>

On the Friday we then have a relatively short ride to the venue in Dunedin. **Accommodation is at a premium in Dunedin so you should make your own arrangements as to where you wish to stay.**



STURGIS 2011 July - August The best of the West

Hire or Ride your own bike



Tour for 42 days with small group of Kiwi riders and experience the best of the West, Sturgis and Canada. Ride to the Grand Canyon, transverse the Rockies, cross Death Valley, over the Golden Gate Bridge, through Yosemite, Yellowstone and Jasper National Park.

Cruise down Route 66, visit saloons in the old western towns of Deadwood and Durango.

Riding your bike

42 days from \$14,850* per couple, \$12,250.00 a single

Hiring a late model Harley Davidson

38 days from \$18,850* per couple, \$16,250.00 a single

Price includes:

Bike Hire or Shipping, Airfares, Luggage van, Excellent accommodation, Experienced guides * Conditions apply

No tenting, long drops or tepid showers!



Enjoy the views over the mighty Pacific Coast riding up the famous Highway 1, and win a fortune at Las Vegas as well as visiting Alcatraz.

Join 600,000 bikers in Sturgis in the fabled Black Hills of South Dakota.

You will experience the absolutely breathtaking scenery and roads that can only be seen in the states as you ride the roads that you have always dreamed of, see the sights you've always wanted to see and experience all the excitement of life on the road in the U.S. Along the way you will enjoy the incredible camaraderie and brotherhood of the U.S. biker culture, and Sturgis still to come.

If keen on finding out a bit more send me an email & include your phone number. Space is limited and interest is high

Enquires — Email Ken O'Leary

jan.ken@paradise.net.nz or Ph 04 9711381





Committee

Director:

Lucy (Lucifer) Haberfield
Ph:970 6294 Home
027 2832158 mob.

Assistant Director: and Newsletter Editor

Terry (Spider) Woodhall
Ph:04 234 6141 Home
027 3275312 mob.
email: debntel@xtra.co.nz

Secretary:

Lynne Wilson (CMF)
Ph: 236 7053 Home
0274 142022 mob.

Treasurer:

Warwick Eves
Ph: 479 2604 Home

Chapter Officers

Head Road Captain:

Russell Finlay
Ph. 04 9053212 Home
021 416926 mob

Activities Officer:

Geoff (Diesel) Cook
Ph: 801 8891 Home
021 432817 mob.

New Membership:

Dennis (Menace) Gill
Ph: 236 6388 Home

Webmaster:

Jon Dey

Merchandise:

Tana Philips
027 300 7687

Full Details on website:
www.wellingtonhog.co.nz

Monthly Happenings

Club night is held on the first Wednesday of the month at the Johnsonville Club (1 Norman Lane off Johnsonville Rd) except January

Monthly club rides are held on the third Sunday of the month, details are on the website as they come to hand.

Calendar

Club Ride Sunday 17th April

Memorial Ride leaving Wellington Motorcycles at 9:30am.

This ride will terminate at Russells house in Waikanae for a Club BBQ and a few drinks.

Russell and Diesel

Club Ride 13th - 15th May

Cold Duck Waipawa this is one of the clubs supported events and official ride. There will be a group heading up on the Friday the 13th leaving Plimmerton Weight Station at Midday and also a ride up on the Saturday leaving Wellington Motorcycles at 9am

Note times to be confirmed

So come along and enjoy a great weekend of music and gals with lots of fun games for all, club will have a large Tent set up. This is the 20th anniversary of this event.

Russell and Diesel.



Club Ride 22th May

Leaving Wellington Motorcycles at 10 am

Details to be advised

Also note leaving time now changed back to 10am as Day Light saving has now ended.

Paddy phones an ambulance because his mate's been hit by a car.

Paddy: 'Get an ambulance here quick, he's bleeding from his nose and ears and I tink both his legs are broken.'

Operator: 'What is your location sir?'

Paddy: 'Outside number 28 Eucalyptus Street.'

Operator: 'How do you spell that sir?'

Silence and after a minute.

Operator: 'Are you there sir?'

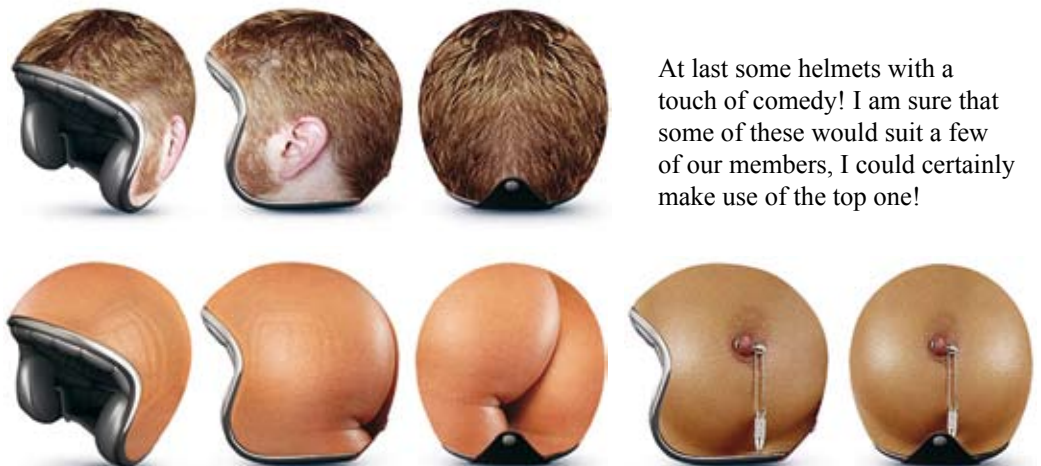
Silence and a minute later.

Operator: 'Sir, can you hear me?'

This goes on for another few minutes until

Operator: 'Sir, please answer me. Can you still hear me?'

Paddy: 'Yes, sorry bout dat. I just dragged him round to number 3 Oak Street'



a Gathering of the Clans



2012

www.newzealandnationalrally.com

An Invitation

Dunedin, the Edinburgh of the South and home of Deep South Kiwi Chapter, invite our fellow H.O.G members to ride down to the lowlands to enjoy our highlands hospitality.

**Join us on the 17th /18th /19th February 2012
for the 22nd New Zealand National H.O.G. Rally.**

We encourage you to book your accommodation as soon as possible.

The Rally location is the Lion Foundation Arena within the Edgar Centre on Portsmouth Drive, Dunedin City.

**Search accommodation at www.dunedinnz.com
or check out www.atoz-nz.com/dunedin.asp**



For 2012 Rally updates and registration information go to www.newzealandnationalrally.com

Deep South Kiwi Chapter 9155 - PO Box 5015 Dunedin - email rally@deepsouthhog.co.nz

**Registrations open April 1st
Why not sort your accommodation now!**